

A young woman with long dark hair, wearing a blue graduation cap and gown, is speaking into a silver microphone. The background is blurred, showing yellow and red elements. In the bottom left corner, there is a decorative graphic of a semi-circle divided into several colored segments: red, orange, green, blue, and yellow.

The International High School Program

**International
School**
Los Angeles
**Lycée
International**





**An international education in
an intercultural community
like ours creates truly special
thinkers.**



Welcome

We are delighted to introduce you to the 9th Grade International Track at the International School of Los Angeles.

If your child has a reflective, inquiring mind, is an open-minded communicator and a principled risk taker, then look no further.

Our 9th and 10th Grade International Track equips students with the skills and knowledge to then confidently continue in the prestigious 11th and 12th grade International Baccalaureate® (IB) Diploma Programme, a rigorous, mini college course, which is universally recognized as one of the most demanding high school programs in the world.

If this piques your interest, please sign up for a preview session. and mini student shadow day.

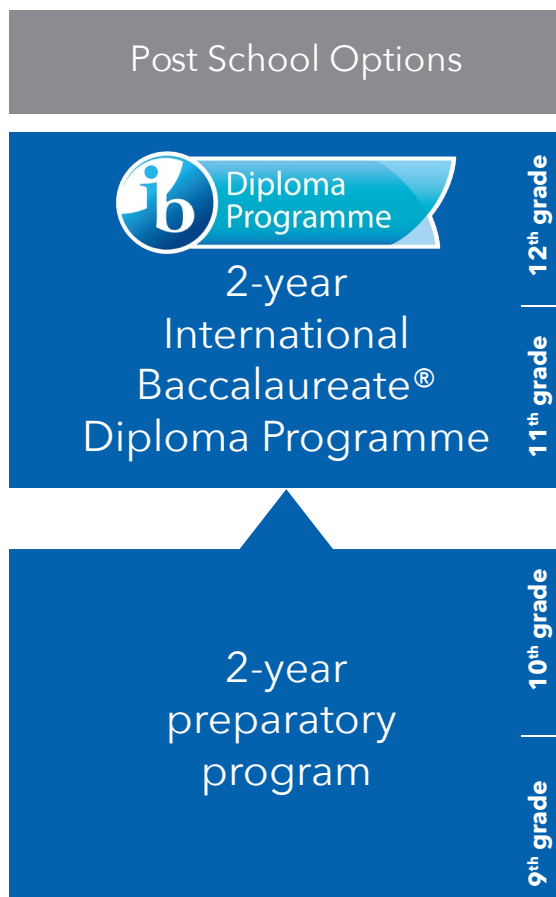
We hope to meet you very soon!

Anneli Harvey
Burbank Campus Director





An international program like no other.



The International School of Los Angeles' international high school program is a carefully mapped trajectory that includes two years of preparation for entrance into the School's accredited two-year International Baccalaureate® (IB) Diploma Programme.



**Our core values are
respect, excellence,
and diversity.**

CK
CALVIN KLEIN JEANS



We are International.

Our goal is to develop confident, caring, and open-minded critical thinkers who will thrive in a diverse competitive world.

The International School of Los Angeles is an international preschool through 12th grade school committed to academic excellence in a nurturing and intimate environment that encourages personal initiative, creativity, and curiosity. All students study a common bilingual program from preschool through 8th grade after which they have a choice between the rigorous and well-balanced French baccalauréat (FB) and International Baccalaureate® Diploma programs. With multiple locations in the Los Angeles area (Burbank, Los Feliz, Pasadena, and West Valley), the School welcomes over 1,000 students. Approximately 10% of our students receive financial aid from the French Government and 23% of our total student population receives school-funded financial aid.

Since 1978, the School has been instilling the love of learning in all its students through small classes and low student-to-teacher ratios. With over 65 nationalities and 40 spoken languages represented on the campuses, students study and live in a diverse global community every day.

Each day, at the International School of Los Angeles, we work with students and faculty towards understanding, acceptance, and inclusion. We work to validate and celebrate the journeys of all of our students.

As an international school we champion diversity and seek to invite new perspectives.

Increasingly with students we look to have the difficult conversations, and discuss how best to suspend judgment and to acknowledge discomfort within that sphere.

Creating a culture of inclusion that views diverse identities as fundamental to our success lies at the very core of our mission.



By developing their intellectual and emotional growth, our well-being program strives to prepare and empower model citizens of the world.



The Burbank Campus

The Burbank Campus is one of the School's five locations throughout the Los Angeles area (other locations include: two in Los Feliz, one in Tarzana, another in Pasadena). The Burbank Campus welcomes students from 6th - 12th grade. The campus is located in the Rancho Equestrian district, perhaps the most famous neighborhood in Burbank due to its equestrian zoning, numerous parks, open space, connections to riding trails in Griffith Park, and proximity to Warner Brothers and Disney Studios. The campus is on Riverside Drive, the Rancho's main thoroughfare, lined with sycamore and oak trees. It is quite common to see people on horseback along Riverside Drive's designated lanes!



1105 W Riverside Dr
Burbank, CA 91506

The one-story building was built in the 1950s by General Motors Corporation for training purposes, and, until recently, was primarily used as a meeting and training venue for automotive-related events and filming. The International School of Los Angeles purchased the property in June 2012 and has worked to convert it into an appropriate secondary campus. Since the doors opened in August 2013, students have found 23 classrooms, four labs, an auditorium, an art room, an indoor sports room, two outdoor volleyball courts, basketball courts, and multi-purpose field. Future phases of development will bring additional indoor facilities and outdoor structures for students.

A stylized white line map of Los Angeles is set against a blue background. Several location pins are placed on the map: one red pin in the northwest, one dark blue pin in the central-north area, and three red pins in the central-east area.

330

students at the Burbank Campus

155

students in high school



average class size of 18 students

The International Baccalaureate® Diploma Programme



The International Track at our school includes two years of preparation and the **International Baccalaureate Diploma Programme's comprehensive two-year curriculum.**

The IB® Diploma Programme promotes student autonomy, independent research, and a rich, post-modern educational environment. The program consists of six academic areas surrounding a core of diploma requirements. These six subject groups include: Studies in Language and Literature, Language Acquisition, Individuals and Societies, Sciences, Mathematics, and The Arts. The courses last two years each, and may be taken at Standard Level or, for more rigor, Higher Level.

All IB Diploma students also undertake a 4,000-word extended essay that is written over a year, participate in a Theory of Knowledge course that pushes students to reflect critically on their learning, and complete a 150-hour CAS (Creativity, Activity, Service) program that encourages students to be involved in the community. Through CAS, the School has seen students invest themselves in meaningful causes from the local to the global level. Twin brothers have traveled to Lebanon to work with refugees, a senior has visited China to teach English with the ME to WE/Free The Children partnership, and others have organized fundraising efforts for the alumna-founded Marpha Foundation.

The School has offered the IB® Diploma Programme for more than 20 years, with many of its students pursuing the prestigious IB® Bilingual Diploma by completing the requirements in both English and French at Literature level. This highly sought-after credential has become another mark of distinction for the International School of Los Angeles' IB students.

Through their achievements in CAS-related efforts and academic endeavors, students at the International School of Los Angeles deeply embody the 10 attributes of the IB Learner Profile.

The profile aims to develop learners who are:

- | | |
|------------------------|----------------------|
| > Inquirers | > Open-minded |
| > Knowledgeable | > Caring |
| > Thinkers | > Risk-takers |
| > Communicators | > Balanced |
| > Principled | > Reflective |

The International School of Los Angeles welcomes motivated incoming 9th grade students to its international program. To learn more visit www.internationalhs.la.

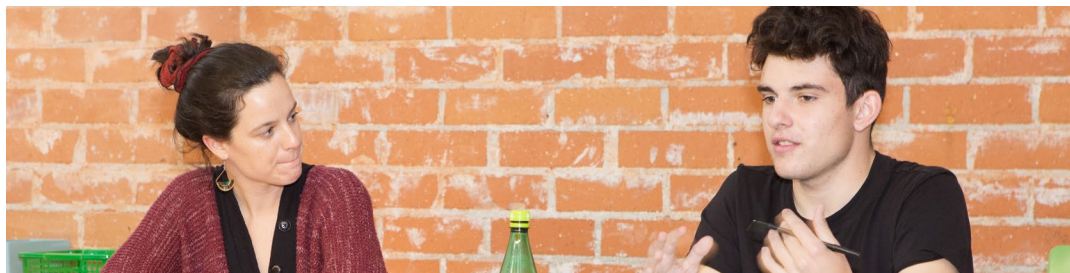
Academic Program

Now recognized as one of the most academically challenging private high schools in the United States, the International School of Los Angeles continues its long commitment to academic excellence and small class sizes.

Through its rigorous academic program, the School meets the needs of highly motivated students and equips them with the skills needed to thrive in, and contribute to, a diverse, competitive world.

Studies in Language and Literature

Individuals and Societies



The study of literary, non-literary, visual, and performance texts provides a focus for understanding how meaning is constructed within belief or value systems and how it is negotiated across multiple perspectives generated by single or multiple readers. Thinking critically about texts, as well as responding to, producing or performing them, leads to an understanding of how language sustains or challenges ways of thinking and being. The study additionally builds an awareness that all texts may be understood in relation to their form, content, purpose, audience, and their associated contexts, such as social, historical, and cultural circumstances.

Studying any one of the Individual and Societies subjects provides for the development of a critical appreciation of human experience and behavior, the varieties of physical, economic and social environments that people inhabit, and the history of social and cultural institutions.

In addition, each subject is designed to foster in students the capacity to identify, to analyze critically and to evaluate theories, concepts and arguments relating to the nature and activities of individuals and societies.

Mathematics



We seek to encourage in students an appreciation of mathematics. In 9th grade, students study algebra and geometry. In 10th grade, topics covered include numbers, algebra, geometry, quadratic functions, functions and relations, trigonometry, and statistics.

In the IB® Diploma Programme, students tackle geometry including 3-dimensions and volume; trigonometry including both right and non-right-angled triangles; descriptive statistics; rates of change; linear correlation of bivariate data; probability distributions including the binomial and normal distributions; mathematical modeling of functions including quadratic, exponential, and sinusoidal; validity tests including Spearman's hypothesis testing and chi-squared tests; and sequences and series including both arithmetic and geometric.

Sciences



Our aim is for students to be scientifically literate. We teach each science discretely – physics, chemistry, and biology – using an inquiry-based approach. Laboratory skills are emphasized, and students graduate well equipped for higher level study.

For the IB® Diploma Programme, we also offer an Environmental Systems and Societies course (ESS). This unique syllabus directly requires the use of field techniques.

Language Acquisition

Every student in the International Baccalaureate® (IB) Diploma Programme (DP) studies in both their best language and in other languages taught as a requirement of the program. This enables students to increase their understanding of several cultures, including their own, and explore globally significant ideas and issues through different languages.

DP students therefore study at least two languages during their time in their program. The International School of Los Angeles offers French and Spanish as in-classroom instruction. Mandarin is also available through the Pamoja Online Learning platform. Prior knowledge of a second language is not required.

The Arts



In visual arts, students identify, select and explore artistic approaches, artworks, cultural contexts, mediums, and forms that interest them. In music, students hone their listening, performing, creative, and writing skills. They play music, write about it, and analyze musical excerpts. Students work on harmony, composition, and arranging skills in order to produce a portfolio of work in a range of musical styles. The School enjoys a thriving choir and band scene, too!



We aim to nurture socially-conscious students who will understand social and political issues in the real world.





The Path to College...

College Counselor Barbara Kuhl

has been advising students at the International School of Los Angeles since 2011. Barbara was previously the School's IB® Coordinator which gives her unique insights as she guides IB® students in how best to position themselves for college.



Test Preparation

The School uses Revolution Prep to help students prepare for the SAT® and ACT®.



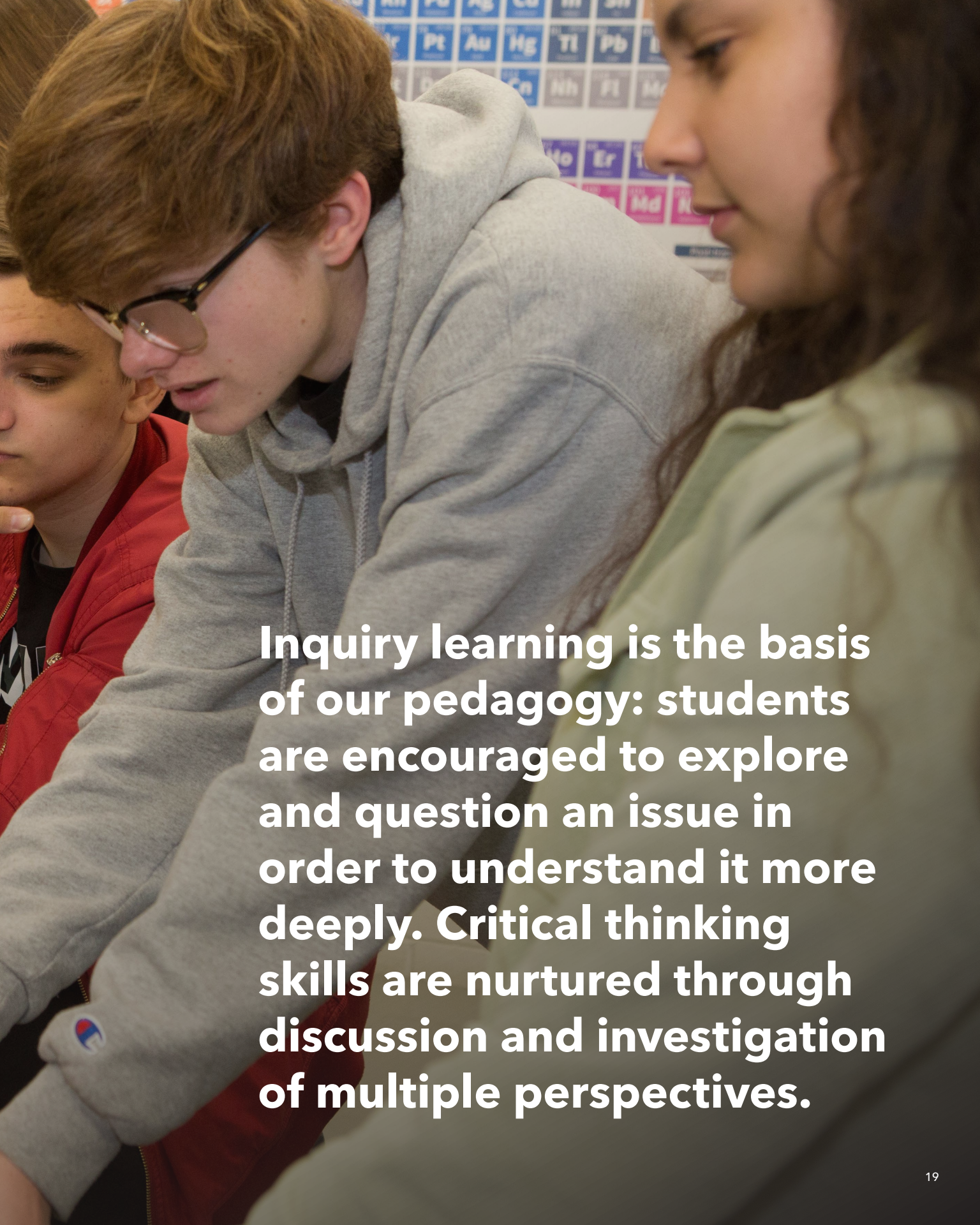
For more information about how to make IB® credentials stand out to universities:

 www.internationalhs.la/college-counseling

Notable matriculations from recent years:

Barnard College
Brown University
Cornell University
Dartmouth College
Georgetown University
Johns Hopkins University
Massachusetts Institute of Technology (MIT)
New York University (NYU)
Princeton University
Stanford University
University of California, Berkeley
University of Chicago
University of Pennsylvania
Yale University



A photograph of three students in a classroom. In the foreground, a young man with brown hair and glasses, wearing a grey hoodie, is looking down. To his right, a young woman with long dark hair, wearing a light green jacket, is also looking down. To the left, another student in a red jacket is partially visible. In the background, a periodic table of elements is mounted on the wall. The text is overlaid on the right side of the image.

Inquiry learning is the basis of our pedagogy: students are encouraged to explore and question an issue in order to understand it more deeply. Critical thinking skills are nurtured through discussion and investigation of multiple perspectives.

Student-led Clubs & Field Trips

Student-led Clubs

Clubs give students a space in which to share ideas, practice leadership, and make their voices heard.

The School's middle and high school student body has created a wide array of student-led clubs and initiatives, ranging from sharing passions to service learning and community involvement. We believe it is important to foster a sense of leadership and involvement within our student body. In alignment with our Expected School-wide Learning Results (ESLRs), student-run clubs optimize a space in which students can be active learners, effective communicators, productive individuals, and active problem solvers who are involved in their school community and beyond.

Field Trips & Overseas Trips

Through its international education, the School aims to nurture socially-conscious students who will understand in-situ social and political issues. Our extended field trip program further provides students the possibility to better comprehend the world. Experiences in Costa Rica, Washington, DC, and other destinations sow the seeds for personal growth, openness, and an embracing of the world.

Examples of Student-led Clubs:

Anime & Manga

Astronomy Club

Cinema and Production

Debate

Ethiopia Reads

Gender and Sexuality Alliance (GSA)

Girl Up Club

Harry Potter Club

Key Club

LILA Gazette

Model United Nations (MUN)

Peer Mediation

Sunrise Movement



HOT.EARTH.
SUMMER.
IS. NOT. CUTE.

STA
NOW
©
R
SWI
LATE

We welcome you to join our growing community.

The first step is to book a **preview session** and **student shadow day** so that we may become better acquainted with our future student and you, and so that you may have the opportunity to gain a greater understanding of our International Track and International Baccalaureate® Diploma Programme.

Once you have decided that the International School of Los Angeles is a great fit for your family, simply fill out the online application and submit all appropriate documentation (listed below).

After applying, prospective students and their families are interviewed. Upon receiving an offer, simply follow the instructions and complete the online enrollment form.

Required documents list:

- Transcripts for the last three years
- Recommendations from a member of the administration, Math teacher, and English teacher
- Independent School Entrance Exam (ISEE) (ERB Code: 571496) or Secondary School Admissions Test (SSAT) results
- A 500-word essay titled "Why I want to be an IB® student"



www.internationalhs.la/admissions

Accreditations, Memberships & Partnerships

The International School of Los Angeles holds accreditation from the French Ministry of Education, the International Baccalaureate® (IB), the Western Association of Schools and Colleges (WASC), and the California Association of Independent Schools (CAIS). The School also belongs to *l'Agence pour l'enseignement français à l'étranger* (AEFE), *la Mission laïque française* (MLF), the National Association of Independent Schools (NAIS), and the College Board.

accreditations



memberships and partnerships



Regarding COVID-19

The School ceased in-person instruction on March 15, 2020 and transitioned to online learning on March 18, 2020. For the 2020-2021 academic year, we are beginning with distance learning. Students are attending classes via remote e-learning in synchronous and asynchronous modes and are expected to be active participants. Our grading policy continues to be in place this academic year, along with our entire college preparatory curriculum.



**International
School**
Los Angeles
**Lycée
International**

1105 W Riverside Drive, Burbank, CA 91506
tel 626-695-5159, admissions@lilaschool.com
www.internationalhs.la